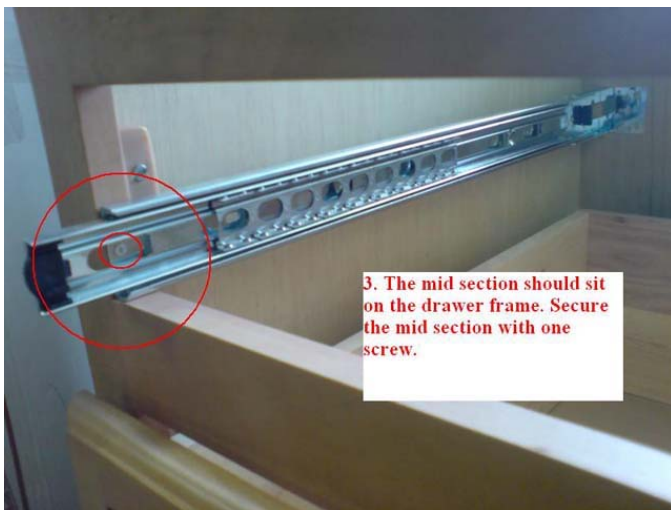




1. Use 2 screws to secure the bracket.



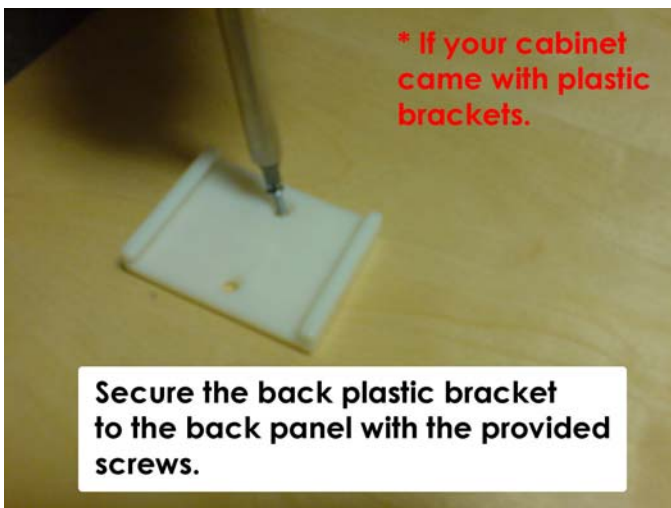
2. Slide the mid section of the track into the bracket.



3. The mid section should sit on the drawer frame. Secure the mid section with one screw.

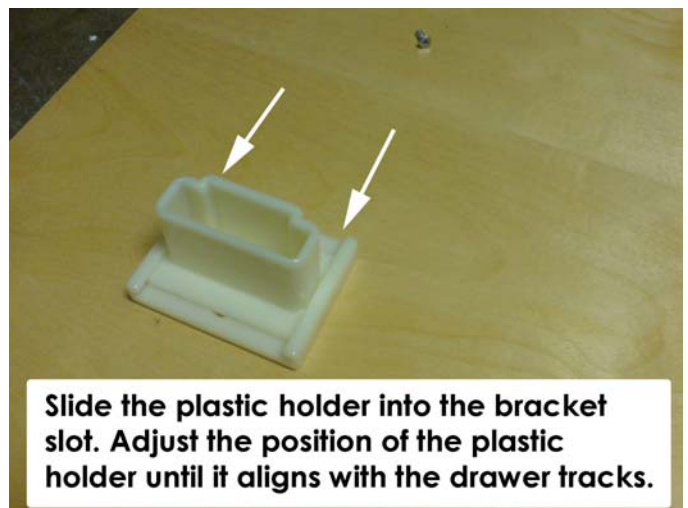


4. After mid section of the left and right track are installed, insert them onto the pre-installed end sections until they clip together. Close the drawer and move on to the next one.



\* If your cabinet came with plastic brackets.

Secure the back plastic bracket to the back panel with the provided screws.



Slide the plastic holder into the bracket slot. Adjust the position of the plastic holder until it aligns with the drawer tracks.